

### 6056 Tikva Trench Coat

Burda sizes 34, 36, 38, 40, 42, 44, 46  
Length from waist to hem = 103cm

### Materials

Garbardine,  
width: 140 cm (55 ins)  
length: 3.8 m (4 1/4 yd) for all sizes.

Lining,  
width: 140 cm (55 ins)  
length: 1.6 m (1 3/4 yd) for all sizes.

Interfacing 90cm x 125cm.

3 buttons.

1 buckle with prong, bar.

Recommended fabrics: poplin, garbardine.

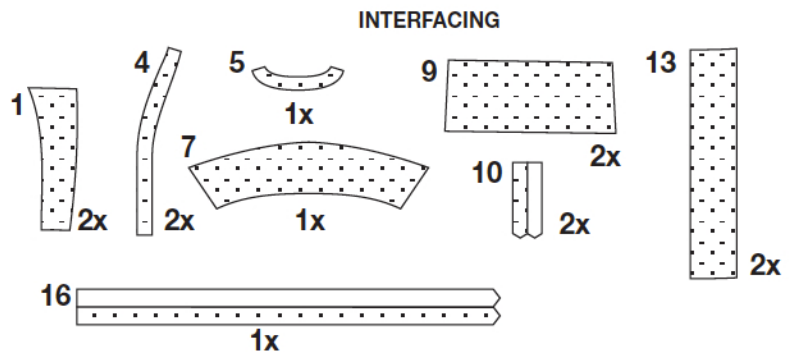
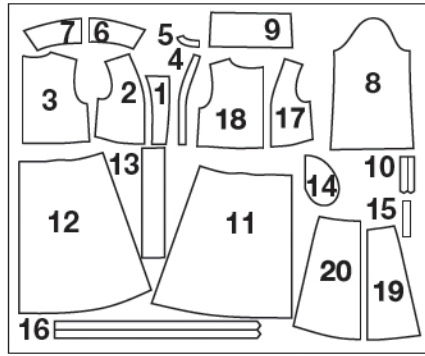
### Preparations

Print the pattern out on letter or A4 sized paper. It is **very** important to not scale the document. Your pattern will print on multiple pages, which you will then tile together. Arrange the sheets on a large, hard and flat surface matching up the numbers and letters (i.e. 6A to 6A). Cut or fold one of the sides and match the edge to it's corresponding side. Then, tape down in place so paper is secure.

Trace the pattern pieces from the pattern sheet following the lines and markings for style 6056 and your size.

### SEAM ALLOWANCES ARE INCLUDED:

Amount added:  
1 5/8" (4 cm) for hem, 5/8" (1.5 cm) for all edges and stitches.



### Cutting Out

- 1 Center front piece 4x
- 2 Side front piece 2x
- 3 Back piece 1x
- 4 Front placket 2x
- 5 Back placket 1x
- 6 Under collar 1x
- 7 Top collar 1x
- 8 Sleeve 2x
- 9 Sleeve cuff 2x
- 10 Sleeve strap 2x
- 11 Front skirt panel 2x
- 12 Back skirt panel 2x
- 13 Front placket 2x
- 14 Pocket pouch 2x
- 15 Loops 1x
- 16 Belt 1x

### Lining pieces:

- 17 Side front piece 2x
- 18 back piece 1x
- 19 Front skirt panel 2x
- 20 Back skirt panel 1x

### INTERFACING

Cut out the interfacing pieces and press onto the wrong side of the

### Sewing

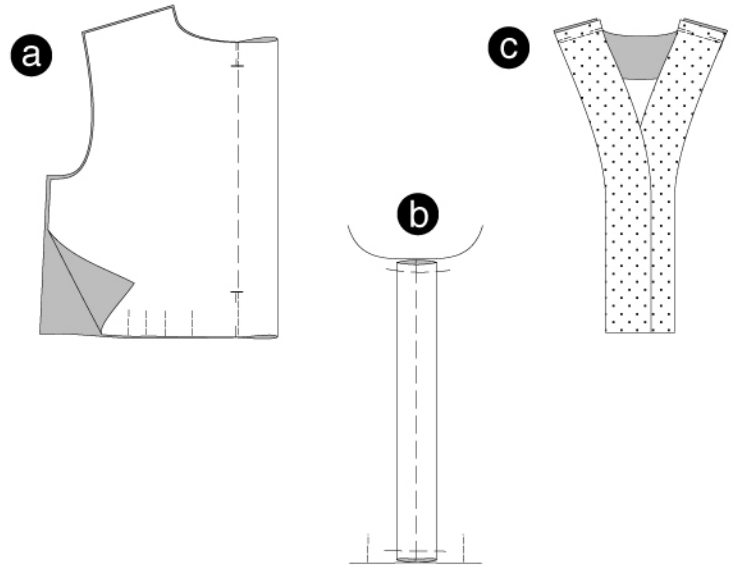
#### COAT

Fold the back piece lengthwise, right sides facing. Pin along the pleat lines and stitch from the top and bottom to the pleat arrow (marking). Secure seam ends. Keep pleats pinned. Position the pleat as box pleat and press; the seam line meets the center back. (a) Pin the top and bottom of the pleat. (b)

#### SHOULDER SEAMS

Position the front and back pieces together, right sides facing. Stitch shoulder seams (seam number 1). Ease the back shoulder edges. Press allowances apart.

Position the front and back plackets together, right sides facing. Stitch shoulder seams (seam number 2). Press allowances apart. (c)

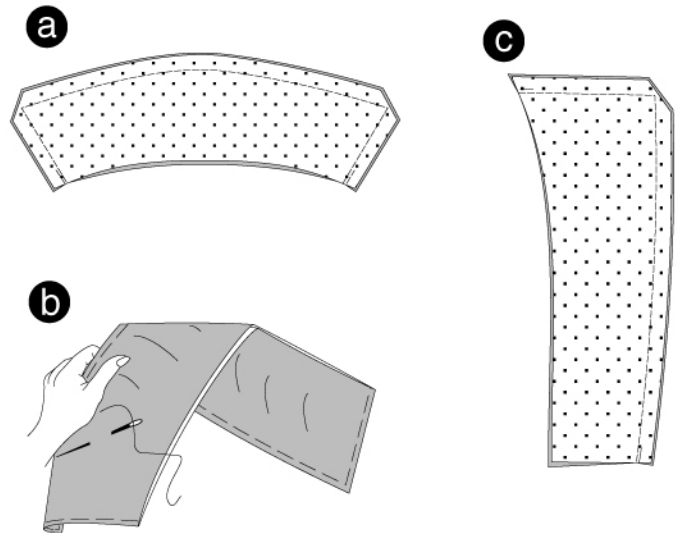


#### COLLAR

Position the undercollar and top collar together, right sides facing. Ease the overlapping length. Position the edges together and stitch. Cut the corners at a slant. Trim allowances. Turn collar, pin the edges and press. (a)

Cup the undercollar slightly. Stitch the top collar onto the undercollar using diagonal staying stitch. Position the open edges together and pin. (b)

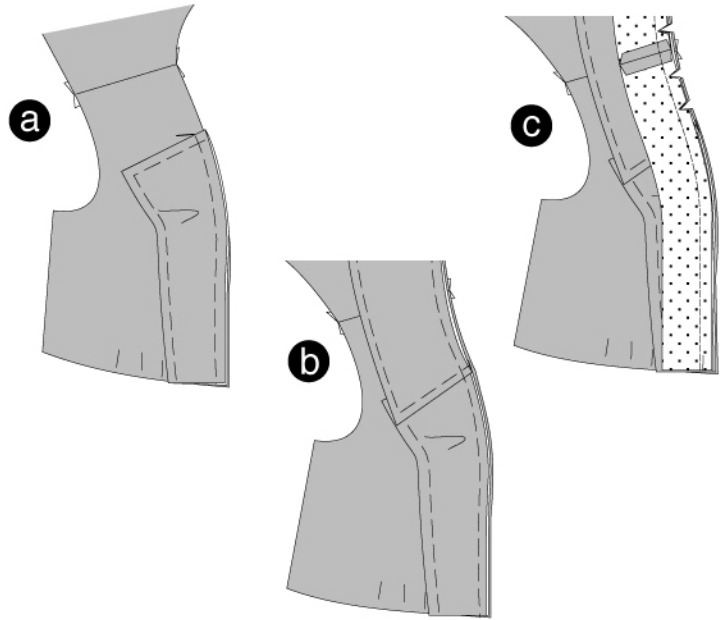
Position interfaced and non-interfaced center front pieces together, right sides facing. Pin top and front edges, then stitch. Trim allowances and cut the corners at a slant. Turn pieces, pin edges and press. Position open edges together and pin. (c)



### Sewing Continued...

Position center front pieces and side front pieces together (seam number 3), right sides facing. The top edge meets cross line. The interfaced piece is the bottom layer. Position the collar between the cross lines of the center front pieces, onto the neckline. The cross lines of the collar meet the shoulder seams. (a) The undercollar is positioned on top of the coat (b).

Position the placket on the edge of top collar and center front pieces, right sides facing. Shoulder seams meet. Stitch. Trim allowances and snip in. turn the placket inside and press. Fold center front pieces and collar to the front. Topstitch the placket narrowly along the seam line. (c)



### SIDE SEAMS

Position the front and back pieces together, right sides facing. Stitch side seams (seam number 4) and stitch. Press allowances apart.

### SLEEVES

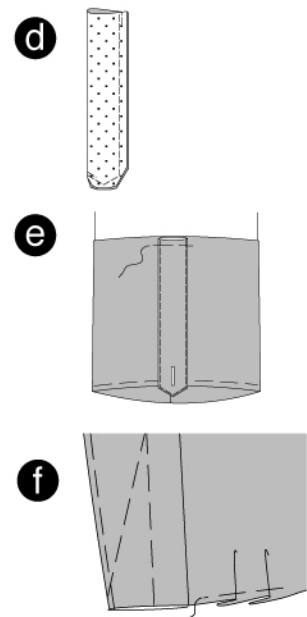
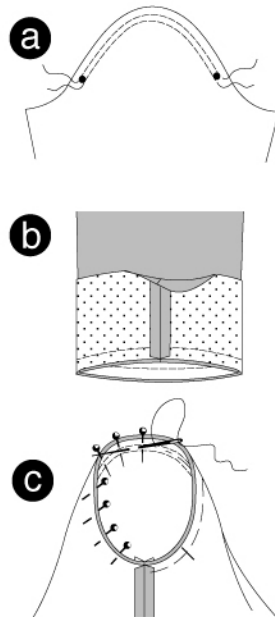
To ease the curve of the sleeve double stitch from \* to \*, using basting stitches. Fold the sleeves lengthwise, right sides facing. Pin sleeve seams (seam number 5). Stitch. Trim allowances and press apart. (a)

### SLEEVE Cuff

Position the ends of the cuff together. Stitch. Press allowances apart. Position the cuff on the bottom edge of the sleeve (seam number 6), right sides facing. Seams meet. Stitch. Trim allowances. Turn the cuff inside the sleeve and press. (b)

### APPLY SLEEVES

To ease the sleeve curve pull the bobbin threads slightly. Position the sleeves on the armhole, right sides facing. When applying the sleeves 4 points are important for the right fit: The cross lines number 7 on sleeves and front pieces have to meet. Sleeve and side seams have to meet. The cross lines on the sleeve curve have to meet the shoulder seams. The eased width has to be distributed in a way that prevents pleats and puckering. Pin the sleeve on the wrong sleeve side. Stitch. Trim allowances and press inside the sleeve. (c)



### SLEEVE STRAP

Fold the strap lengthwise, right sides facing. Stitch edges together. Trim allowances and cut the corners at a slant. Turn the strap. Pin edges and press. (d) Work a BUTTON HOLE into the strap. Position the open edges between the cross lines on the wrong side of the sleeve cuff (e). Do not enclose the sleeve.

### PLEATS

Fold the pleats according to the pleat arrows on the right side of front and back piece. Pin. (f)

### Sewing Continued...

#### LINING / TOP PIECE

Stitch the back pleat, shoulder and side seams of the lining pieces. Press. Same seam numbers have to meet. Pin the pleat at its bottom edge. Apply sleeves.

Position the lining piece on the placket (seam number 10), right sides facing. Shoulder seams meet. Stitch. Trim allowances and press inside the lining. Put the lining piece inside the coat, wrong sides facing. (a)

Fold the bottom edge of the lining. Pin the edge onto the cuff. Do not enclose the sleeve. Pull out the seam allowances between fabric and lining. Stitch those edges together, right sides facing (b). Enclose the sleeve strap (c). Push pieces back so that the wrong sides are facing. Press the allowances of the sleeve cuff inside the sleeve. Stitch the strap with a boxed-in "X", enclosing the sleeve (d)

At the top piece, position the bottom edges of fabric and lining pieces together. Stitch. Seams and pleats meet. Position the back skirt panels together, right sides facing. Stitch the back center seam. Press allowances apart.

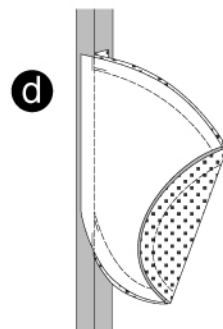
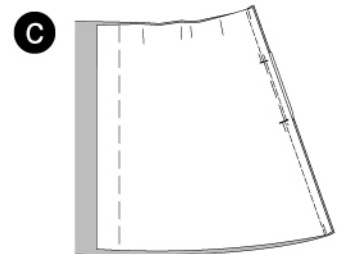
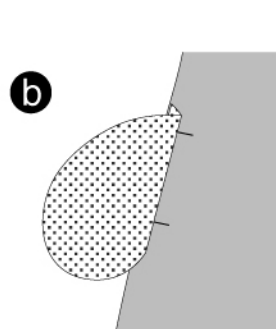
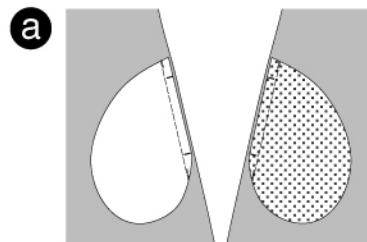
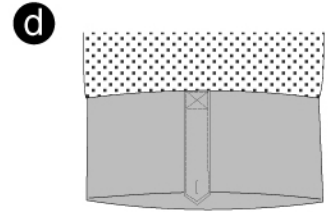
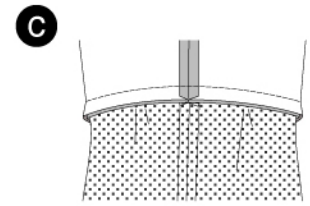
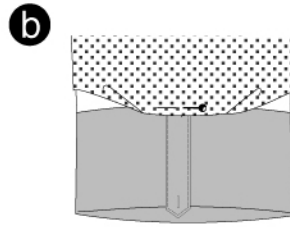
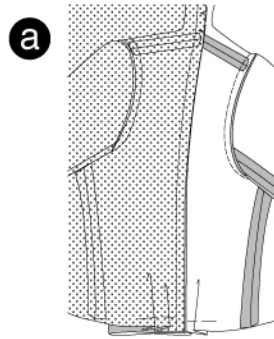
#### SIDE SEAMS / POCKET SEAMS

Position and pin the lining pocket pouch on the front skirt panels and the fabric pocket pouch on the back skirt panel. The cross lines meet. Stitch. Secure seam ends. (a)

Fold the pocket pouches over the seam lines and press. (b)

Position the front and back skirt panels together. Pin side seams (seam number 11). Stitch, leave out the pocket openings between the cross lines, but keep them pinned. Secure seam ends. (c)

Press allowances apart. Press pocket pouch inside the front skirt panel, position together and stitch. Position the pleats along the top edge according to the arrows on the right fabric side. Pin. (d)



### Sewing Continued...

#### LINING

Stitch the side seams along the lining skirt panels (seam number 12). Important for one of the side seams: stitch around 4" (10 cm) from the top and from the bottom. Keep the rest of the side seam open to be able to turn the coat later on. Secure seam ends. Press allowances apart. (a)

Position the front plackets on the front edges of the lining skirt panels (seam number 13), right sides facing. Pin and stitch. Press allowances inside the lining. (b)

Double stitch the bottom skirt edge using basting stitches. Tighten bobbin thread to the width of the lining skirt (with plackets). Knot thread ends. Distribute the width equally. (c)

Position the bottom edge of the coat on the bottom edge of the lining piece (seam number 14), right sides facing. The side seams meet. Stitch. Press allowances inside the lining. (d)

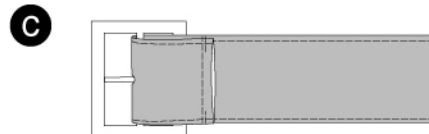
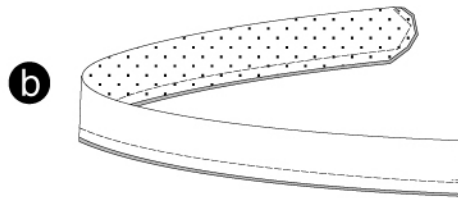
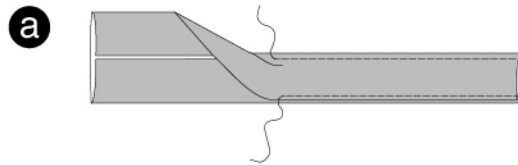
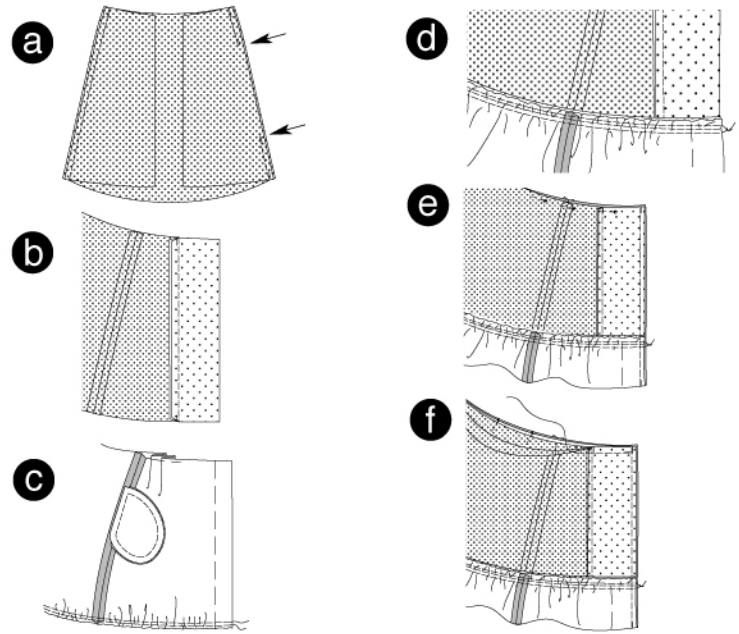
Position lining and plackets on the top skirt edge, right sides facing. In that way the hemline of the coat will be bunched up. Position front edges (seam number 15) together and pin. Stitch. Remove pins, but do NOT turn the coat yet. (e)

#### STITCH TOP PIECE

Push the top piece between the fabric and the lining part of the skirt piece.

Position the top piece onto the top edge of the fabric skirt (seam number 15), right sides facing and the centers meeting. Side seams and pleats meet as well. Apply the lining piece and pin. Stitch. Now, turn the coat through the lining side seam. Pin the seam opening and press. Topstitch the edge narrowly. (f)

Work a **BUTTON HOLE** into the right front piece. Sew a big **BUTTON** onto the left center front piece. For the straps on the sleeves, sew smaller buttons onto \* marking on the sleeves.



#### LOOPS

Fold the strip so that the edges meet the center line. Press. Fold again in half, wrong sides facing. Press. Topstitch long edges narrowly. Cut the strip into two pieces and neaten strip ends. (a)

#### BELT

Fold the belt lengthwise, right sides facing. Pin edges and stitch. Trim allowances and cut the corners at a slant. (b) Turn belt. Pin edges, press and topstitch narrowly. Neaten ends.

Work a hole into the belt, around 3" (7 cm) from the open belt end. Neaten. You could use a rivet to neaten the hole. Attach this end of the belt to a buckle. Wrap the belt end around the bar of the buckle (the belt prong goes through the hole just made) and stitch. Apply eyelets to the angled belt end. (c)